



March 2025

*The mind*  
of a person  
**PLANS HIS WAY,**  
**BUT THE LORD**  
*directs* **HIS STEPS.**

*Proverbs 16:9, NASB*



355 E. State Road 120

Fremont, IN 46737

(260) 495-4306

[www.plcms.org](http://www.plcms.org)

A member of the Lutheran Church—Missouri Synod



# A Letter from Pastor Teeple

Dear friends in Christ,

The month of March brings a season of change—not just in the weather, but in our spiritual journey as well. We move from the light of the season of Epiphany into the reflective and penitential season of Lent – a time for drawing closer to Christ.

Transfiguration Sunday on **March 2** marks this day of transition, as Jesus is revealed in glory on the mountaintop, preparing His disciples—and us—for the road to the cross. It is a reminder that while we love those mountaintop moments of clarity and joy, faith is also lived in the everyday journey of trust and obedience. We also will hear God the Father say to us, *“This is My beloved Son. Listen to Him.”* And so we listen to Jesus!

That journey of listening begins in earnest with **Ash Wednesday on March 6 at 6:30pm**, when we gather for worship. Many receive the sign of ashes; we will also celebrate the Holy Supper. These simple but powerful acts remind us of both our mortality and God’s unending grace in Jesus Christ. Lent is a season of renewal—an opportunity to recommit ourselves to prayer, worship, and service. Whether you take on a new discipline or set something aside as a spiritual practice, the goal is the same: to create space for God to work in our lives, minds, and hearts.

Speaking of time, **Daylight Saving Time** begins on **Sunday, March 9**. Be sure to set your clocks forward an hour so you don’t miss Sunday worship! Losing an hour of sleep isn’t ideal, but gathering together to worship is always worth it!

And for those traveling for **Spring Break**, I encourage you to find a church wherever you are or join us online. God doesn’t take a break from loving us, and our faith is strengthened when we stay connected, even when we’re away.

May this season of Lent be a time of renewal, reflection, and deeper discipleship for us all. I look forward to walking this journey with you.

All peace to you in Jesus Christ.

Pastor Jeff Teeple

# A Letter from Pastor Rudolph

*The grace of the Lord Jesus Christ and the love of God and the fellowship of the Holy Spirit be with you all. - 2 Corinthians 13:14*

During the season of Lent, you will hear this phrase often. Grace...Love...Fellowship. We're well aware of the words "grace" and "love". But "fellowship"? Fellowship is not just the name of an event hall or the name of a church event. It is a reality of our Christian Church that flows from the Gospel itself. Through faith, Christ shares everything with us. He shares His righteousness, love, and life with us. God is not the kind of god that wants to stay distant. He wants to be close to us, to have a relationship with us, and to share all that He has with us. For this reason, Christ has sent His very Spirit to be with us and to live in us. This Holy Spirit is what calls us by the Gospel and grants us faith.

Through this faith, we share in all those great blessings Christ won for us on the cross: Grace, Love, and Fellowship. We gather together as Christ's body in worship to receive these very things through His Word and His Sacraments. This can be seen in a special, physical way in the Lord's Supper, where Christ comes to us physically as we eat and drink His very body and blood as the Spirit strengthens the faith in us through it. At the table (wherever we eat and drink His body and blood), we find great fellowship through the Holy Spirit which connects us to Christ and to all that Christ shares His Spirit with.

But this fellowship doesn't end at the doors of the sanctuary. Sure, we receive them there as gifts from God Himself, but they go with us out from the sanctuary and into our lives as Christians. This is the reason why churches have "Fellowship Halls". Our fellowship starts with the One Spirit who speaks to us in the sanctuary and then flows into our time, our energy, and other God-given blessings as well. As we are united in Christ by the Gospel, we leave the sanctuary and live together as a community that supports each other during hard times and during easy times.

The Church is not just a random group of people you talk to once a week for 1 hour and then ignore for the other 167 hours of the week. The Church is a group of people united by God through faith in Jesus's death and resurrection. The Church is a group of people who believe the same things, hope in the same things, and prioritize the same things. The Church includes the people you will spend the rest of eternity with, so it's a blessing to come together in Christian Fellowship to get to know your fellow church-members already now, even if they go to a different service than you go to.

Whether it is around a meal, around games, or around something else, our fellowship flows from the altar of Christ into our lives and into everything we do. Thanks be to God that we can share our time with each other, participating in each other's lives, and enjoying fellowship with each other in our fine new facility. I encourage you all to join us when we have events here at Church, to share and to participate in each other's lives. Fellowship, the Fellowship of the Holy Spirit which flows from the altar to us, is a great gift of God for us that stays with us throughout our lives, whether we are in the Sanctuary or not. *The grace of the Lord Jesus Christ and the love of God and the fellowship of the Holy Spirit be with you all.*

Pastor Jared Rudolph

# Making Sense of Our Congregational Finances

Dear Church Family,

As your Business Administrator, I want to take a moment to bring some clarity to how our church finances work. Each month I work with the Board of Directors to provide updates. We also work together to find ways to keep you aware of how the congregation is doing in this challenging and exciting year. Hopefully this article helps!

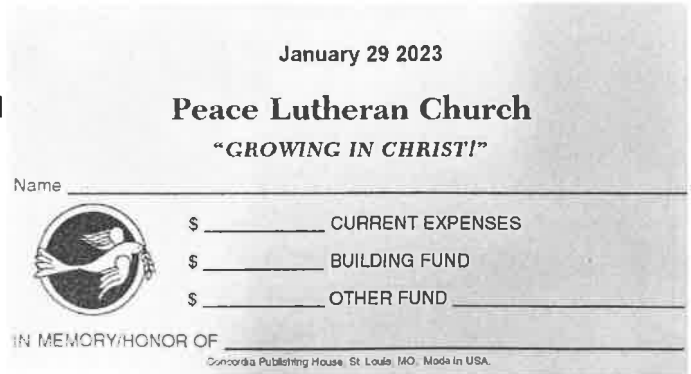
We know that numbers and budgets can sometimes feel overwhelming, but our goal as leaders is to provide transparency and help you understand how your giving supports the mission and ministry here at Peace.

## Where Our Revenue Comes From

Our primary sources of revenue are the envelope and plate contributions given by members and visitors. These funds directly support our **operating expenses**, which include everything from staff salaries and utilities to church cleaning, snow removal, HVAC maintenance, and much more. Simply put, these contributions keep the church and facility running day to day.

On our giving envelopes and online, you'll see different categories (see the picture beside this article):

- **Current Expenses** – This supports our general operating budget.
- **Building Fund** – These gifts go specifically to our capital campaign pledges and mortgage reduction.
- **Other Designated Funds** – Contributions here are directed to specific ministries like the Comfort Dog Ministry, Memorial Fund, or Pastor's Discretionary Fund. Please note that these Designated Funds do **NOT** help cover operating expenses.



January 29 2023

Peace Lutheran Church  
"GROWING IN CHRIST!"

Name \_\_\_\_\_

\$ \_\_\_\_\_ CURRENT EXPENSES

\$ \_\_\_\_\_ BUILDING FUND

\$ \_\_\_\_\_ OTHER FUND \_\_\_\_\_

IN MEMORY/HONOR OF \_\_\_\_\_

Concordia Publishing House, St. Louis, MO, Made in USA.

## The 2025 Budget

At the end of 2024, our Board of Directors worked diligently to cut expenses everywhere possible, and our congregation voted on and passed a budget with a **\$73,740.18 deficit**. This means that, based on current projections, our revenue from envelope and plate contributions will not fully cover our expenses for the year.

So, we are closely watching this progress and invite you to do the same. As a church family, we are in this together, and we encourage everyone to **pray** over this challenge and **act** as God moves them—whether that means increasing giving, finding creative ways to support the church, or simply staying informed. Every effort, big or small, makes a difference in helping us steward our resources well.

## Staying Informed

Our Board of Directors and congregational leaders are committed to keeping you informed throughout the year. You can always find the **previous month's financial reports** posted on the bulletin board outside the Fellowship Hall (by the old church office). Also, if you'd like a copy mailed or emailed to you, please reach out to me by phone or email.

Peace Lutheran has always been a place where generosity and faithfulness make a difference! We are grateful for every gift given, and we trust in God's provision as we continue serving Him together.

Thank you for being a part of God's ministry here – and not simply through contributions, but also through your prayers and **ALL** you do!

If you have any questions, please don't hesitate to ask—I am here to help!

In His service and yours,

Kristin McGee

Business Administrator

admin@plcms.org



## LENTEN MIDWEEK WORSHIP

Starting on  
Ash Wednesday, March 5, weekday  
worship services will move from  
Mondays to Wednesdays at 6:30pm  
during Lent.

## CHANGE YOUR Clocks

Daylight Savings Time begins  
Sunday, March 9. Remember to  
turn your clocks ahead one hour.



### Soup Suppers during Lent

Before our Wednesday evening  
Lent Services, beginning March 12, we  
will be having our soup suppers,  
starting at 5:30pm.

A sign-up sheet is available on the  
information desk if you would like to  
contribute a soup, bread, or dessert.



We are planning to have breakfast on Easter Sunday  
again this year. A sign-up sheet to help with egg  
casseroles, coffee cakes, and other tasty breakfast  
treats will be available in the next few weeks.

Never made an egg casserole but still want to  
participate? Keep an eye out in the April newsletter  
for recipes you can use for this very special time of  
fellowship.

Many thanks to Larry and Marie Font for organizing  
the breakfast again this year!



## Peace Garden Ministry

I just came in from shoveling a 4-inch layer of spring sunshine from the driveway. Oh, maybe that white stuff was something else. Hmm, could it be that Punxsutawney Phil this year is going to improve on his only 35% record of being correct on his prediction? (Just as long as he stays out of our garden). Perhaps with Easter being "late" this year, the gardening season will be as well.

But today I am also wearing a T-shirt that says, "You're Never too Old to Play in the Dirt!" and so it is time to get out all those saved seed packets and see what might be started. I've harvested some asparagus seed from last year's plants and got them started along with some onion and leeks. Our Creator has gifted us with blessings of all kinds - even hundreds of thousands of seeds ready to burst forth into goodness. And so thoughts abound of delicious, fresh vegetables and gorgeous, fragrant flowers that we can be growing in the garden this year.

This year will be a significant year for the Peace Garden Ministry – oh my, we are becoming a teenager – as this is our 13th year of existence. There are 26 plots available for church members as well as other interested persons from our community.

There will be additional information in the April newsletter as well as a sign-up sheet on the information desk later this month. Yes, certainly gardening is hard work, but oh the glorious rewards coming from our Creator's hand. Contact Don Luepke at [donluepke@juno.com](mailto:donluepke@juno.com) for more information or with any questions.



### LAWN CARE VOLUNTEER OPPORTUNITY

**Do you need more time in the sun? Looking for an excuse to spend more time outdoors? Like being part of a team? Have we got an opportunity for you!**

**As we all know, our church is a place of beauty and tranquility, and part of maintaining that charm lies in taking care of our lawn. We are**

**looking for volunteers who would be willing to help with mowing the lawn on a scheduled basis.**

**If you have some time to spare and a green thumb or just a willingness to help, we would love to have you on board. It's a wonderful opportunity to contribute to the upkeep of our church grounds and also to spend some time outdoors.**

**Please sign up at the information desk in the East Lobby. Further details will be provided as spring nears.**

**Thank you so much for considering this request. Your support and efforts will be greatly appreciated by the entire church community. Together, we can keep our church looking its best!**



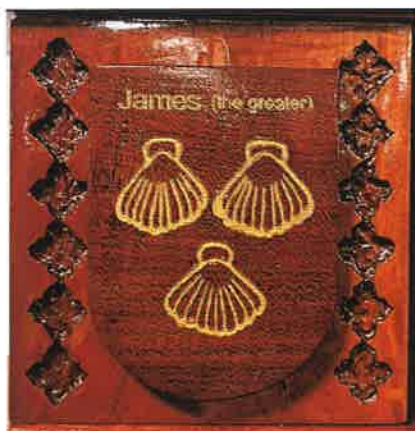
## YOU'RE INVITED TO A POTLUCK MEAL

Sunday, March 9  
following 10:30am worship  
in the Fellowship Hall  
*Bring a passing dish to share.*

We also encourage you to bring a board game or card game to play as we come together in Christian fellowship.

---

## The Old Chancel Cross

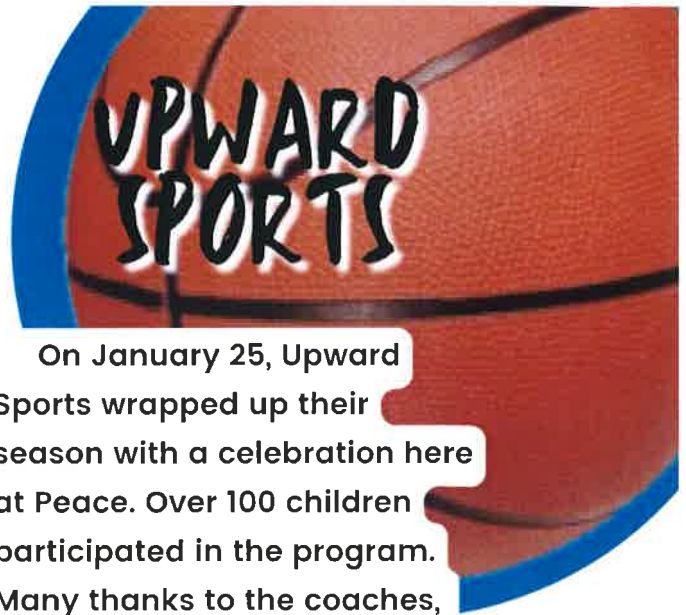


This symbol represents **St. James the Greater** (not the half brother of Jesus) **and his association with pilgrimage and baptism.** The scallop shell is a traditional emblem of pilgrimage, particularly linked to the Camino de Santiago (the 'Way of St. James'), where pilgrims historically used shells to scoop water and as a badge of their journey. The number three may have additional symbolic meanings, such as: The Holy Trinity (Father, Son, and Holy Spirit) or the three missionary journeys attributed to St. James. This symbol often signifies a commitment to faith and spiritual journeys.

**St. John the Evangelist** is often symbolized by **a chalice with a serpent**, representing a powerful legend of his protection by God. According to tradition, a pagan priest challenged John to drink from a poisoned cup, but after John blessed the chalice, the poison emerged in the form of a serpent, leaving John unharmed. This image serves as a reminder of faith's triumph over evil, symbolizing John's deep spiritual discernment and connection to the truth. The chalice also represents the Cup of Salvation and Holy Communion, reinforcing his role as an apostle of love and divine wisdom. Unlike the other apostles, John was not martyred, and died at an old age.







On January 25, Upward Sports wrapped up their season with a celebration here at Peace. Over 100 children participated in the program. Many thanks to the coaches, commissioners, referees, and volunteers who made this program possible for our area youth!





# DOVE Tales

Friends,

Have you enjoyed the snow this winter? I LOVE getting my zoomies out in the snow drifts! I admit that my coat probably works better than yours for chilly activities like catching snowballs. Take a look at my Facebook site or ask anyone on Team Dove – I truly love to be joyful and playing in the snow brings me so much joy!

I have been busy at the schools. You may think that all my visits are full of happiness and mostly they are. Sometimes, though, the stories I hear include bad people, meanness, fear. Other times there are worries about homework, tests, loss of pets, and other heartaches. Counselors come now and then with someone who needs one-on-one time. They are always kind and talk reassuringly, sitting with us on the floor. I'm told God uses me in very special ways and I'm blessed with all the loving attention and words I receive. Wherever I go, I'm assured that I do bring comfort, joy, lots of smiles – and kindness. My team and I want to spread as much kindness as we can!

Would you like to be part of Team Dove? It's a wonderful way to share God's love through kindness in our part of the world! If you have considered joining the Comfort Dog team, please reach out to Hope Korte at [comfortdog@plcms.org](mailto:comfortdog@plcms.org) or talk to Pastor Teeple or Pastor Rudolph. There are so many ways you can help.

See you in church!

Love,

Dove





## Stephen Ministry Works

Does that surprise you? It shouldn't. In the early church where Christians gathered to hear the Word of God and worship Him, it became evident that there was a great need to help congregations serve those who were experiencing difficult events in their lives. Who could be there for them on a regular basis, walking beside them, listening, caring, praying with them as they traversed a bumpy road? Certainly the Apostles could not handle all of that. Enter Stephen, a

man of God, who had a heart for caring, and so he was chosen to oversee this ministry in the early church.

Fast forward to 1975 when a Lutheran pastor, Kenneth Hough, experienced the frustration of not being able to provide the continual time needed for members as well as those in the community who were going through tough times. Thus was established the STEHEN MINISTRY SYSTEM. Peace Lutheran Church is committed to this formal ministry to assist our pastors by spending a dedicated period of time to journey with those in need of a listening friend.

THE SYSTEM WORKS! Powerful results happen. It strengthens our congregation by connecting trained men and women with folks who are struggling. It carries one of our mission focal points to "care for others" in practical and tangible ways.

It all begins with you. If you are carrying a burden, big or small, please speak with one of our pastors or Stephen Leaders and we will walk with you through the process. Together we will decide if this might be helpful for you. Secondly, if you know of a person who could benefit from this ministry, talk with them and seek their permission to share their name with our leaders and we will contact them and go from there. There is no pressure, just a caring presence of fellow believers ready to stand along side of them "when the going gets tough." To God be the glory!

AMERICAN RED CROSS

**BLOOD  
DRIVE**



## Peace Lutheran Blood Drive

**March 26th  
9:00am-1:00pm**

Visit [redcrossblood.org](http://redcrossblood.org)  
to set up an appointment.

Thank you 

**Thank you for all the love,  
prayers, and hugs.  
-Cindy Wiebke**





You're invited to a  
**BABY SHOWER BRUNCH**

honoring

*Tirzah Rudolph*

Saturday, March 22

10:00am

Peace Lutheran Church

Fellowship Hall

Let's celebrate with the Rudolph family as they prepare to welcome a baby girl. See the information desk for more details!



**Lutheran Women**  
*in Mission*

**LENTEN  
ALMSGIVING  
PROJECT**

**ACTSFW**  
CLOTHING CO-OP

Concordia Theological Seminary forms servants in Jesus Christ who teach the faithful, reach the lost, and care for all. The Seminary prepares men and women to serve God as pastors and deaconesses in the Church. Recognizing that most students live on a very limited income, the seminary has established the Clothing Co-op to provide for them during their student years.

The Lenten Almsgiving Project, organized by Peace's Lutheran Women in Mission, will help furnish items for the Clothing (and household) Co-Op at Concordia Theological Seminary in Fort Wayne. Working together, we can help these students as they prepare to serve the Church. Over the six weeks of Lent, beginning with Ash Wednesday, you are encouraged to support this very special Almsgiving project! As we focus our attention on the clothing Co-Op over the next several weeks, the collection tote will remain available in the West Lobby for food donations of your preference. Please bring Clothing Co-Op items to the table in the East Lobby:

*Week 1: March 5 - 11*

New or gently used children's clothing: boys or girls ages 6-12

*Week 2: March 12 - 18*

New baby linens: crib sheets, blankets, changing table pads, bibs and burp cloths

*Week 3: March 19 - 25*

New socks and underwear: sizes toddler through adult

*Weeks 4 through 6 – More info to come!*

*These items are also appreciated, any week, Ash Wednesday through Palm Sunday:  
gas gift cards and grocery gift cards*

GriefShare®

# Grief Support Group

*Help and encouragement  
after the death of a  
loved one*

**At a GriefShare group,  
you'll find understanding,  
guidance, relief, and a safe  
place to navigate the  
challenges of grief.  
Come join us!**

## Contact Us Today

**Tuesdays 6:30-8:30 PM  
March 4-May 27**

**Peace Lutheran Church  
355 E State Road 120  
Fremont, IN**

**Contact: Luanne Haupt  
d.haupt431@gmail.com  
260-639-7339**

**Register at [griefshare.org/findagroup](http://griefshare.org/findagroup)**

**[griefshare.org](http://griefshare.org)**



Family Promise is an organization that provides meals, overnight housing, and other vital services to homeless women, children, & families.

Working with the community, Family Promise aims to prevent and end homelessness for families with children by helping them achieve sustainable independence.

Peace Lutheran helps to provide meals on rotation to Family Promise residents. Our next opportunity to serve will be in March 17-March 21. If you would like to contribute towards these meals, look for the sign-up sheet on the information desk. Items contributed can be as simple as a sheet cake or cookies, or a main dish such as beef and noodles, chili, or a casserole.



Be joyful in hope,  
patient in affliction,  
faithful in prayer.

Romans 12:12





**WEE CREATIONS**  
Early Learning Ministry  
OF PEACE LUTHERAN  
355 E State Road 120  
Fremont, IN 46737



having fun





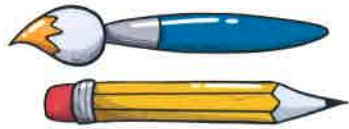
# VALENTINE'S DAY PARTY



Despite a few weather challenges, Wee Creations children and staff were able to celebrate Valentine's Day with classroom parties! The day was spent making heart-themed crafts, sharing treats and Valentines with their friends, and even creating heart-shaped pizzas for a snack. The day was made even more special by jumping in the bouncy houses in the gym!

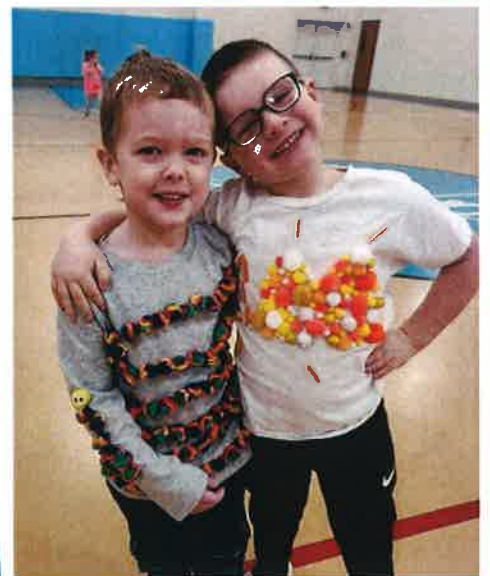






# 100th Day of School

Wee Creations preschool students celebrated the 100th day of school with lots of counting activities. Children practiced counting by 1s, 10s, and 100s, and worked on counting out 100 snacks. They even discussed what they would do if they were 100 years old.



# Peace Resources

**PHONE NUMBER — 260-495-4306**

**Office Extensions:**

Secretary- 301

Pastor Teeple- 302

Pastor Rudolph- 303

Kristin McGee- 304

Wee Creations Office- 305

Church Service Hours- 321

**Church Text Messages  
& Email App**

**To sign up for church text messages:**

Send a text to the number **81010**.

In the message type “**@peacefrem**”.

You will receive a text asking for your name.

Respond with your first and last name.

You will receive text messages regarding church updates.

***If you have already signed up, you do not need to sign up again.***

**We welcome you to join us for our  
Worship Services**

***Sunday***

8:00am

9:15am Educational Hour

10:30am

***Wednesday***

6:30pm

**WEBSITE — [www.plcms.org](http://www.plcms.org)**

**EMAIL ADDRESSES — at church:**

Pastor Jeff Teeple – [PastorT@plcms.org](mailto:PastorT@plcms.org)

Pastor Jared Rudolph - [PastorRudolph@plcms.org](mailto:PastorRudolph@plcms.org)

Sara Miller – [Director@weecreations.org](mailto:Director@weecreations.org)

Kristin McGee – [Admin@plcms.org](mailto:Admin@plcms.org)

Emily Disbro - [secretary@plcms.org](mailto:secretary@plcms.org)

Amber Vonderau - [amber@plcms.org](mailto:amber@plcms.org)

Hope Korte – [ComfortDog@plcms.org](mailto:ComfortDog@plcms.org)

Mary Anne Hibbard - [mhibbard@plcms.org](mailto:mhibbard@plcms.org)

Judy Scharpenberg - [kjscharp@mchsi.com](mailto:kjscharp@mchsi.com)



**RightNow Media** – Please remember all the resources that are available to you and your family free of charge through RightNow Media! It is a clearinghouse of videos, Bible studies, and podcasts that help you grow in your faith toward God and love for others! If you haven't signed up (and even if you have!) be sure to access this amazing library of Christian material! (Checkout the link in our e-news to sign up!)



**E-News** – Just a reminder that we continue to publish our e-news and announcements every week. If you haven't signed up to receive e-news through your email, please email Pastor Teeple and he will get you signed up! If you did sign up and haven't seen it, please double check your SPAM folder; it is an email that comes from the secretary's email address: [secretary@plcms.org](mailto:secretary@plcms.org)



# MARCH

## BIRTHDAYS

3/2	Dan Toigo	3/24	Lois Susin
3/3	Grant Korte		Boyd Tuttle
3/4	Earlene Panning Sue Shollenberger	3/25	Loren Jackemeyer Dan Haffner
3/5	Scott Bond Chuck Crosby Rick Panning		Lori Lowie Cindy Wilson
3/6	Kelly Johnson	3/28	Sydney Hinchliffe Brooke Shelburne Taylor Shelburne
3/7	Marla Toigo Andrew Miller	3/29	Amber Vonderau
3/8	Jack Clark	3/31	Tina King
3/10	Chris Hanke Bill Metzger		Joshua Mann
3/11	Jaeger Bergquist		
3/12	Ken Scharpenberg		
3/13	Audrey McDowell		
3/15	Cheryl Johnson		
3/18	Luanne Haupt Sandy Heilman Larry Hibbard Casault		
3/20	Tammy Panning		
3/22	Emma Griffiths Brian Parrish		
3/23	Tom Gerbers Ron Oldsen Barbara Kraegel		

## ANNIVERSARIES

3/3/1967	Dan & Patti Haffner
3/5/2022	Pastor Jared & Tirzah Rudolph
3/18/1967	Don & Joyce Schuller
3/18/1972	Jerry & Linda Lake
3/26/1966	Jim & Linda Miller
3/27/1981	Dick & Pam Lehman
3/27/1982	Peter & Randi Keck

## Altar Flowers 2025

3/2	Steve & Linda Soldano
3/9	Rod & Lori Olson
3/16	Eugene Sumney
3/23	Chris Harwood
3/30	Pastor Jeff & Gina Teeple

Sun	Mon	Tue	Wed	Thu	Fr	Sat
23 Transfiguration 8am - Worship/H/C 9:15am - BC/SS 10:30am - Worship/H/C	24 10am - Women's Study- 5:30pm - Scouts 6:30pm - NO WORSHIP	25 10am - WCM Chapel 6:30pm - GriefShare-Conf Rm	26 Ash Wednesday 9:30am - Sewing Sisters 10am - Online Bible Study 12:30pm - "A Walk Through the 5:30pm - Gym Reserved Special 6:30pm - Worship/H/C	27 9:30am - Bible Study	28 Pastors' Day Off 6pm - Gym reserved	1 9am - Gym Reserved
9 Daylight Savings Time 8am - Worship/H/C 9:15am - BC/SS 10:30am - Worship 11:30am - Fellowship Meal	10 10am - Women's Study- 12:30pm - Elders Mtg-Library 5:30pm - Scouts	11 10am - WCM Chapel 6:30pm - BOD Mtg- 6:30pm - GriefShare-Conf Rm	12 9:30am - Sewing Sisters 10am - Online Bible Study 12pm - Staff Meeting 5:30pm - Gym Reserved Special 5:30pm - Soup Supper 6:30pm - Midweek Lent Worship	13 9:30am - Bible Study	14 Pastors' Day Off 10am - SM Superv. Conference 3pm - F Hall reserved	15 Newsletter Deadline
16 8am - Worship 9:15am - BC/SS 10:30am - Worship/H/C	17 Family Promise Meals Week 10am - Women's Study- 5:30pm - Scouts	18 10am - WCM Chapel 4pm - CD Mtg 6:30pm - GriefShare-Conf Rm	19 9:30am - Sewing Sisters 10am - Online Bible Study 12:30pm - "A Walk Through the 5:30pm - Gym Reserved Special 5:30pm - Soup Supper 6:30pm - Midweek Lent Worship	20 9:30am - Bible Study	21 Pastors' Day Off	22 10am - Rudolph Baby Shower-F
23 8am - Worship/H/C 9:15am - BC/SS 10:30am - Worship	24 10am - Women's Study-	25 10am - WCM Chapel 6:30pm - GriefShare-Conf Rm	26 9am - Red Cross Blood Drive 9:30am - Sewing Sisters 10am - Online Bible Study 5:30pm - Gym Reserved Special 5:30pm - Soup Supper 6:30pm - Midweek Lent Worship	27 9:30am - Bible Study	28 Pastors' Day Off 10am - SM Superv.	29
30 8am - Worship 9:15am - BC/SS 10:30am - Worship	31 10am - Women's Study- 5:30pm - Scouts	1	2	3	4	5